



# CLINICAL COGNITIVE

## FACILITATOR TRAINING

CLINICALLY FOCUSED  
CULTURALLY RESPECTFUL  
ETHICALLY RESPONSIBLE

2023

Certified Psilocybin Facilitator Training



# TABLE OF CONTENTS



- 01. Intro
- 02. What Will I Learn?
- 03. On Campus Certified Psilocybin Facilitator Program
- 04. Hybrid Certified Psilocybin Facilitator Program
- 05. Which Program is right for me?
- 06. Student Support
- 07. Meet the Team
- 10. How to Apply
- 11. Tuition and Payment Details
- 12. FAQ
- 13. Contact Information
- 14. UpHold Our Troops

# INTRO

Clinical Cognitive Facilitator Training strives to be the best psilocybin facilitator training center in Oregon, providing foundational education that is respectful of ancient cultures and traditions and brings leading psychological support methods to elevate the psilocybin facilitator profession.

Our mission is to provide those seeking psilocybin therapy with highly trained, ethical and caring professional facilitators supporting them through their journey.

Our educational team are passionate about the value of alternative forms of healing, including entheogenic medicine. We believe in the healing power of psilocybin for those struggling with anxiety, depression, PTSD, OCD, and addictive behaviors. We prepare graduates to step confidently into the psilocybin service center and provide the skills for preparation, administration and integration of a psilocybin experience.

Full-time on campus didactic coursework classes are held Monday through Thursday from 9 am to 4 pm, and are kept small to allow for personalized attention and instruction.

Innovative hybrid schedules are also available with didactic coursework done via our online portal.

Students receive 40 hours of experiential practicum, meeting the state requirements, delivering psilocybin services in the appropriate set and setting, in both private and group sessions.

We are committed to inclusivity and diversity as well as providing ongoing continuing education and support.

Follow us on Instagram and FB for a virtual look into our classrooms, and book a tour to come see the Clinical Cognitive difference yourself!

@clinical.cognitive



clinical cognitive faciliator training







CLINICAL COGNITIVE  
FACILITATOR TRAINING

# WHAT WILL I *learn?*

*Vocabulary*

*Historical Significance*

*Cultural Significance*

*Cultural Equity*

*Societal Equity*

*Safety*

*Ethics*

*Responsibilities*

*Scope of Practice*

*Psilocybin Pharmacology*

*Psilocybin Dosing*

*Neuroscience + Research*

*Facilitation Skills*

*Trauma Informed Care*

*Client Intake*

*End of Life Care*

*Confidentiality*

*Record Keeping*

*Set + Setting in  
Administration*

*Integration Skills*

*Managing a Negative  
Experience*

*Group Facilitation*

*Oregon Law*

*CPR + First Aid*

# ON CAMPUS

## CERTIFIED PSILOCYBIN FACILITATOR

This accelerated, 175 hour program is designed to take the unlicensed student from novice to Certified Psilocybin Facilitator in 8 weeks. Students are onsite Monday through Thursday, from 9 AM to 4 PM for the six week didactic portion of the program. The experiential practicum then introduces all three aspects of the state requirements; preparation and orientation, administration and integration for 40 hours. We allow the personal internal work that accompanies your investment in facilitating your client's journey.



Small classes with a dedicated team of educators prepares graduates to step confidently into the psilocybin service center and provide the skills for preparation, administration and integration of a psilocybin experience.



# HYBRID

## CERTIFIED PSILOCYBIN FACILITATOR

The hybrid program is for self directed learners. It includes the didactic portion virtually through our online portal. When the units are complete, students make arrangements with the Executive Director to meet the experiential practicum portion of the program.



We have arrangements for discounted lodging at two nearby hotels for those who need accomodations.



# WHICH ONE IS RIGHT FOR ME?

## HYBRID vs ON CAMPUS

### ON-CAMPUS Program

Meets on-site Monday-Thursday for six weeks for the didactic requirements of training.

Meets on-site four days a week for two weeks for the experiential practicum requirements of training.

#### HOMEWORK

Approximately 8 weeks to complete

### HYBRID Program

Didactic portion completed flexibly via online portal.

Meet with educator virtually for check-ins for first 10 Modules.

Flexibly meets on-site for the experiential practicum requirements of training

#### HOMEWORK

Can have access to the online portal for one year.

# STUDENT SUPPORT

We provide coaching, tutoring and mentoring support after graduation so graduates have greater opportunities for success through networking and continuing education in an evolving industry. P\$yBiz is a regularly held workshop based on the Oregon Psilocybin Business Manual, supporting graduates who would like to be independent contractors.



# MEET OUR TEAM



Mary Nielsen

Executive Director

Mary Nielsen is the entrepreneurial founder of Clinical Cognitive Facilitator Training. Mary is the Executive Director and founder of Spectrum Advanced Aesthetics Institute ([www.spectrumlasertraining.com](http://www.spectrumlasertraining.com)), the OG of Fearless Beauties ([www.fearlessbeauties.org](http://www.fearlessbeauties.org)) and an author of several textbooks. She believes in the empowerment found in education and in supporting alternative medicine options for health.



Selisha Abbas

Psilocybin Facilitator Lead Instructor

Selisha Abbas has worked in education and curriculum development for 12+ years. She is an accidental psychonaut, microdose mentor, certified advanced esthetician, a certified phlebotomist, licensed psilocybin educator and lover of all things beauty. She can take complex curriculum and break it into digestible learning concepts for students. She is dedicated to our students' success in the facilitator training program and emerging psychedelic industry. Her beliefs and lived experiences in the power of plant-based medicines contributes to her vision of our program development, program goals and adds strength to our psilocybin facilitator training program. She believes in a growth mindset and is always learning new information and educating herself in psychedelics, to pass this knowledge on to our students and alumni.



## Mandy Isaacs

Student Services Coordinator/  
Lead Instructor

Mandy Isaacs has served for four years as the Student Services Coordinator and a licensed instructor at Spectrum Advanced Aesthetics Institute. She's had advanced training in trauma informed care and mental health first aid. With Mandy's experience in counseling and coaching sessions with hundreds of students, she'll pass on the skills for interviewing and preparing potential clients who want a psilocybin experience, managing the psilocybin client experience, including identifying and appropriately managing a negative experience.



## Curt Erickson

Instructor

Curt Erickson has years and years of emergency response training as an EMT and then as a 911 Dispatch Supervisor. He retired from government work and taught CPR and First Aid classes. He joins this team with an enthusiasm for connecting with people and love of teaching. In his spare time, Curt owns Northwest Motorcycle School and would love to teach you to ride! He is also an accomplished musician and plays the bass.

## Guest Speakers

We have a variety of guest speakers to provide a well rounded perspective. Breathwork, substance use disorder, risk management and liability insurance, CPR and First Aid are a few of the outside speakers that appear live or via Zoom. Our Hybrid Students are welcome to join the onsite group for guest speakers.





## Becky Cronkhite-Johns

### Advisory Board Member

Becky is a mental health professional. In an adult corrections treatment program, she provides specialized mental health counseling to a group of offenders demonstrating emotional trauma, cognitive and/or behavioral disorders. She provides unit leadership and assists the supervising psychologist in the management of the treatment programs. Her involvement ensures we are clinically focused.



## Bobbi Kline MD

### Advisory Board Member

A licensed physician, with decades of practicing medicine, holistic health, & intuitive coaching, including Ob-Gyn, Functional Medicine, Functional Genomics, Energy & Mind-Body Medicine, Human Design & Astrology. She has extensive experience creating courses for healthcare practitioners, teaching integrative approaches for mind, body & soul health



## Terry Phillip

### Advisory Board Member

Terry is a corporate director. He was born in Grenada and grew up in Trinidad-Tobago. He is a personal advocate for alternative forms of healing and healers. His involvement ensures we are culturally respectful.



## Francine Raften

### Advisory Board Member

Francine is a marketing professional who was instrumental in the growth of the cannabis industry when it was launched in Washington. She provided structure to the growth of several organizations to more than one location.



## Darlyn Rodriguez

### Advisory Board Member

Darlyn is a corporate attorney with leadership in diversity, equity and inclusion. She is a participant in the Women of Color Development Program, former Communications Lead for Microsoft's Hispanic/Latinx ERG and former Lead for HOLA CELA, the Hispanic/Latinx Employee Network. Her involvement will ensure we stay ethically responsible.



# HOW TO APPLY



## SCHEDULE A TOUR 01

Call or email to schedule a tour of our 1800+ square foot campus.

## TOUR 02

Experience our school in action. Check out the classrooms and facilitation areas.

## DECIDE ON YOUR START DATE 03

Small class sizes mean our programs fill quickly.

## DETERMINE YOUR TUITION FUNDING 04

We have payment plan options or you may decide on private tuition funding.

## PAY YOUR DEPOSIT TO HOLD YOUR SEAT

## 05

You will coordinate your enrollment with our Coordinator and Director. You will sign the enrollment agreement electronically through DocuSign.

You will receive an email one to two weeks prior to your start date with Orientation details.

Students must be 21 years of age or older.

# PAYMENT PLANS



## Tuition and Payment Plans

	Plan A	Plan B	Plan C
Application Fee	\$50	\$50	\$50
Down Payment Due 2 Weeks Prior to Start Date	\$1975	\$1975	\$1975
Payment 1 due on Day 1	\$5925	\$3062.50*	\$2125**
Payment 2 due on Week 6			\$2125**
Payment 3 due on Week 9		\$3062.50*	\$2125**
<b>TOTAL TUITION PAID</b>	<b>\$7900</b>	<b>\$8100*</b>	<b>\$8350**</b>
* Includes \$100 loan fee	** Includes \$150 loan fee		

## DON'T MISS THE DETAILS

### 2023 Tuition Payment Options

Down payment to hold your seat: \$1975 (Tuition) + \$50 (Enrollment Fee) = \$2025

### CHECK OUT SCHOLARSHIP OPPORTUNITIES AT

Sheri Eckert Foundation; <https://www.sherieckert.org/>

Healing Advocacy Fund Fellowship; Notify Admissions if you would like to be nominated for a scholarship.

# FAQ

How old do I have to be to enroll ?

You must be 21 years of age.

Do you accept FAFSA or other federal funding?

Psilocybin is a federally regulated Class 1 drug that is illegal nationally, although individual states are decriminalizing it. Oregon is the first state in the country to legalize its use without medical authorization. Federal funding, such as FAFSA, will not approve tuition for this program.

What is the dress code?

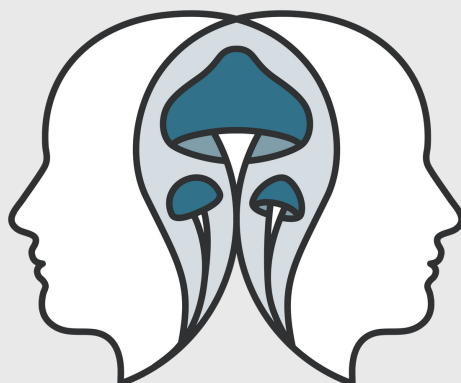
Please wear business casual.

Do you provide job placement services?

Upon enrollment students are added to an electronic mailing list. We do not guarantee job placement but when we are contacted, we eblast these positions out to all Clinical Cognitive alumni to have the opportunity to apply.

Is my tuition tax deductible?

Yes. By January 31st of the next year, our bookkeeper will mail a 1098T form to you to include with your income taxes. This is why we need your social security number upon enrollment. We also need a mailing address. Please update us if you move so this form isn't returned to us.



LET'S GET IN TOUCH



6650 SW Redwood Lane

#380

Portland OR 97224

503-971-470-8090

clinicalcognitive@gmail.com

[www.clinicalcognitivetraining.com](http://www.clinicalcognitivetraining.com)

@clinical.cognitive



@clinical.cognitive



ClinicalCognitiveFacilitatorTraining



Clinical Cognitive Facilitator Training





# UPHOLD OUR TROOPS

We recognize the mental health crisis in our nation and seek to reduce its profound impact on our military citizens. We offer tuition support for veterans who choose to train as facilitators through our non-profit organization, UpLift Our Troops. It is our fervent desire to create sustainable change for our military brothers and sisters, so that all Oregonians may benefit from their healing.

Your application will be reviewed by the scholarship team of the UpHold Our Troops board who may contact you for additional information.

If you are active military or a veteran and wish a psilocybin journey, please email us for an application at [clinicalcognitive@gmail.com](mailto:clinicalcognitive@gmail.com).





## Mary Cronkhite-Johns

### UpHold Our Troops Board President

Mary is a military veteran now working in a corporate environment. She is a cross-functional leader, recognized for inspiring outstanding performance, quality execution, performance under pressure, and delivery in the face of ambiguity. Poised presenter and trusted adviser to executive leaders. She leads the UpHold Our Troops organization with personal experience and a vision to improve mental health for our military and veterans.



## Mary Nielsen

### UpHold Our Troops Board Secretary

Mary is the entrepreneurial founder of Clinical Cognitive Facilitator Training. Mary is the Executive Director and founder of Spectrum Advanced Aesthetics Institute ([www.spectrumlasertraining.com](http://www.spectrumlasertraining.com)), the OG of Fearless Beauties ([www.fearlessbeauties.org](http://www.fearlessbeauties.org)) and an author of several textbooks. She believes in the empowerment found in education and in supporting alternative medicine options for health.



## Marsha Sargeant

### UpHold Our Troops Vice President

Terry is a corporate director. He was born in the Grenada and gr



## Francine Raften

### UpHold Our Troops Board Treasurer

Francine is a marketing professional who was instrumental in the growth of the cannabis industry when it was launched in Washington. She provided structure to the growth of several organizations to more than one location.





